

Sköld

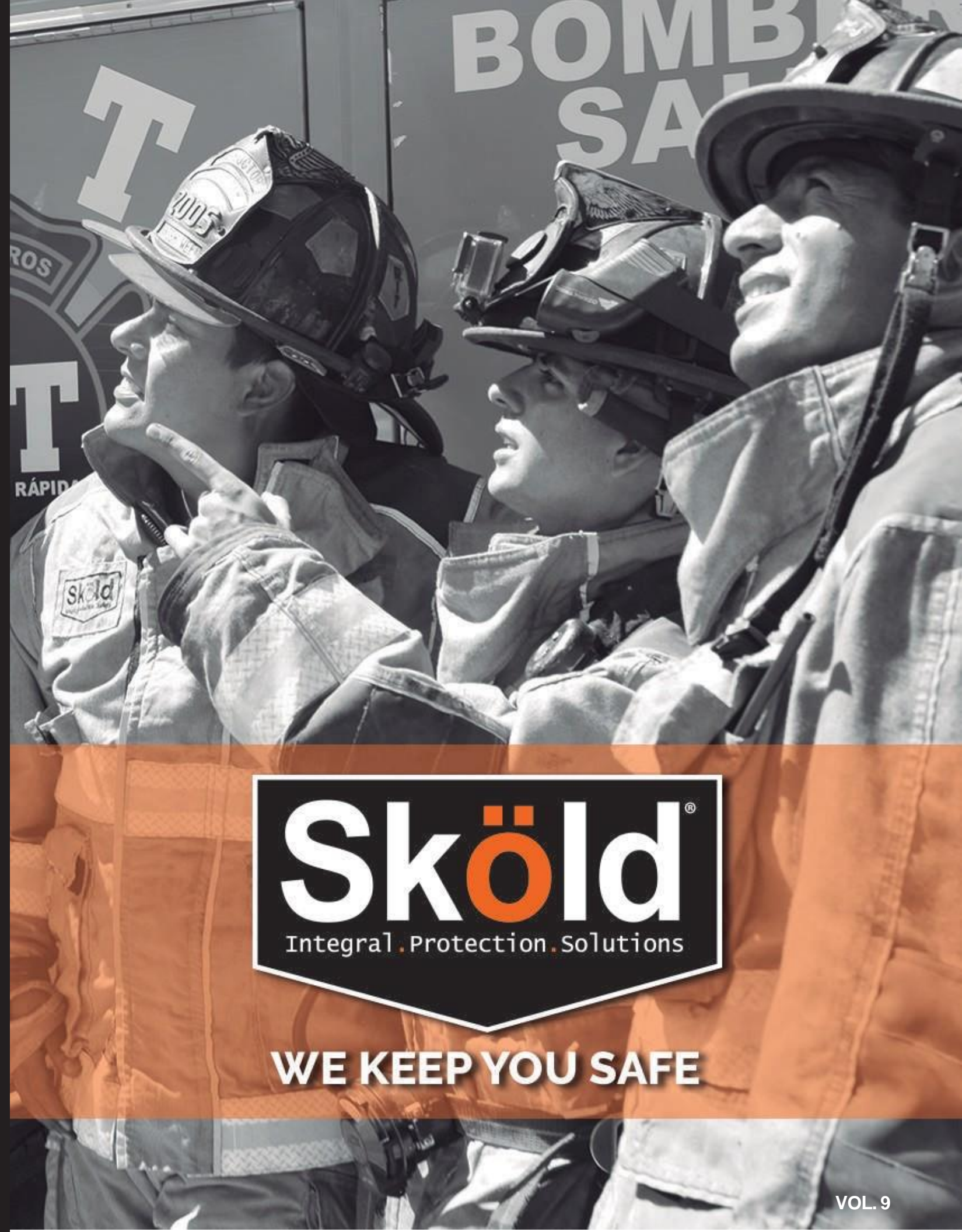
WE KEEP YOU SAFE.

Equipos de Seguridad Industrial e Institucional, S.A. de C.V.

ACCESO NORTE 280 INT. 3 SAN LUIS POTOSI, S.L.P. C.P.
78038

TEL. (444) 5359760 y 8-31-45-09

Correo Electrónico: ventas@esiiaslp.com
ventasesiiaslp2@Gmail.com



WE KEEP YOU SAFE

WE MANUFACTURE
PERSONAL PROTECTIVE
EQUIPMENT (PPE) FOR
**SAFETY, FIRE AND
RESCUE.**



In Sköld we manufacture Fire and Fire Fighting Turnout Gear and Personal Protective Equipment for national and international markets, offering only the highest quality and best prices for our products. Our passion is your safety and comfort.

OUR VISION FOR OUR PRODUCTS

Personal safety should be obtainable and affordable for all businesses it should be comfortable and have the best quality knowing that a life depends on it.

OUR BUSINESS VISION

If it's not the best we will not manufacture it. We have to be different. Our most important priority is our customers.

Learn much more visiting our web page at
www.skoldsafety.com



Sköld Safety has commercial presence over 18 countries.



We have offices and distribution centers in Mexico and USA.

Sköld Products are manufactured with the upmost quality standars in complaint with international standars and certifications to ensure the safety of the end user.



We are present in many type of industries.





SKÖLDTRACKER

Sköldtracker is Sköld's new tool to help its users keep all information and proper management of their Sköld teams.

Using Sköldtracker is very simple



If you have not registered in Sköldtracker you will be asked for an email and a password. When you log in you will be able to have all the information on our equipment in addition to scheduling alerts so that our equipment is always in the best conditions.

With Sköldtracker you can see from any device with QR reader: Android, IOS, Windows (any device with QR reader, camera and internet access)



- Schedule of alerts for monthly, annual maintenance, etc.
- Serial number of your equipment.
- Date of manufacture.
- Expiry date.
- Manuals.
- Guarantees.
- Maintenance videos.
- Training.

In addition to spaces that can be filled by the user as in which warehouse is, who uses it, conditions of the equipment. This products have Sköldtracker.



Firefighter Turnout Gear



SCBA



Fall Protection



Gas Protection



Eyewash Station



Eyewash Shower

Manage all your Sköld equipments in a simple, orderly and free way to be ready with all the information for any review or audit and everything from your mobile device.



FIRE- FIGHTER GEAR



DEFENDER

by Sköld

DEFENDER TURNOUT GEAR

Ideal for the Municipal and Industrial Firefighter manufactured with materials that meet and exceed NFPA standards. Sköld fire fighting suits are designed to meet the most demanding conditions in the industry that firefighters face day in and day out. Its design offers greater security but also comfort and optimal mobility for the user inside the suit when fighting fires and rescue work.

PROTECTION BARRIER

- Dupont™ Nomex® IIIA 7.5
- Oz. Nomex-Kevlar Fusion
- PBI Max
- Chambray FR Thermal Barrier 7.5 Oz.
- Humidity Barrier Stedair 3000.
- Complies with NFPA 1971-1991 standards.

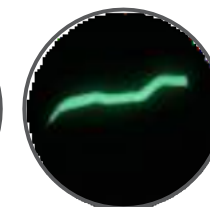
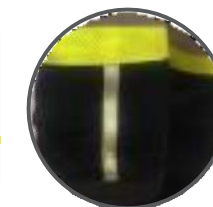


DEFENDER TURNOUT GEAR

Ideal for the industrial fire fighter Sköld Industrial Fire Fighters Turnout Gear has been designed to satisfy to meet the demanding conditions that firefighters face every day. Our fabrics exceed the requirements of NFPA. Their ability for thermo resistance in case of extreme heat plus an excellent resistance to cut and tear abrasion. Our gear meets and exceeds the mechanical, physical and chemical properties requested in the NFPA standards. Its design provides improved fit for better performance, greater security while providing comfort and mobility.

PROTECTION BARRIER

- Dupont™ Nomex® Outer shell.
- Chambray Thermal Barrier
- Neoprene Moisture Barrier
- Complies with NFPA 1971-1991 standards.



Reflective tape that is charged with light

DEFENDER COMBO FP-COM-1

Coat, pants, suspenders, helmet, boots, gloves, hood and suit carry bag.

DEFENDER COMBO WITH DRD FP-COM-2

Coat, pants, suspenders, helmet, boots, gloves, hood and suit carry bag.

DEFENDER KITFP-KIT

Coat, pants and suspenders.

DEFENDER PROFESIONAL COMBO FP-COM-3

Coat, pants, suspenders, helmet, boots, gloves, hood and suit carry bag.

DEFENDER PROFESIONAL KIT FPSK-2013

Coat, pants and suspenders.

DEFENDER NOMEX KEVLAR COMBO FP-COM-6

Coat, pants, suspenders, helmet, boots, gloves, hood and suit carry bag.

DEFENDER NOMEX KEVLAR KIT FPKIT-NKD

Coat, pants and suspenders.

DEFENDER PBI MAX COMBO FP-COM-4

Coat, pants, suspenders, helmet, boots, gloves, hood and suit carry bag.

DEFENDER PBI MAX KIT FPKIT-PBI

Coat, pants and suspenders.



DEFENDER
by Sköld





HERO TURNOUT GEAR

Sköld firefighting suits have been designed to meet the demanding conditions that firefighters face every day. Our fabrics meet and exceed the requirements of NFPA 2013, their ability for thermo resistance in case of flare-ups, they have also excellent resistance to cut and tear abrasion. It's design provides improved for improved performance, greater security while providing comfort and mobility inside the firefighter suit while fighting fires or during rescue actions. You're assured of proven performance at a great value.



PROTECTION BARRIER

- PBI MAX or Dupont™ Kevlar/Nomex® Outer Shell
- Stedair 3000 moisture barrier
- Aralite thermal barrier
- Complies with NFPA 1971-2013 standards

FIREFIGHTER TURNOUT GEAR FABRIC'S GUIDE

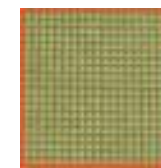
Firefighter's turnout gear suits are made with three barriers, these are available in different combinations that gives them different levels of protection, comfort and durability.

EXTERIOR BARRIER (Available in different colors)

Outer shell



Dupont™
Nomex®
IIIA



PBI MAX
(70% PBI 30%
Kevlar)



Carbon X



Kevlar/Nomex®



Aluminized/Kevlar

HUMIDITY BARRIER

Protection against vapors



Neoprene



Stedair 3000

THERMAL BARRIER

Protection against heat



Chambray



Aralite

REFLECTIVE TAPES



- 3" in Micro perforated tape.
- 2" in Hi-visibility lime color.
- 1" in Hi-reflective silver trim..



- 3" in Orafold Reflexlite Hi-Visibility prismatic tape.
- Edge to edge reflectivity offers superior visibility in low light conditions.

TURNOUT GEAR

HERO NOMEX COMBO FP-COM-8

Coat, pants, suspenders, helmet, boots, gloves, hood, perforated reflective tape and suit carry bag.

HERO NOMEX NFPA 2013 KIT FP-KITNH

Coat, pants and suspenders.

HERO NOMEX KEVLAR COMBO FP-COM-7

Coat, pants, suspenders, helmet, boots, gloves, hood, perforated reflective tape and suit carry bag.

HERO NOMEX KEVLAR NFPA 2013 KIT FP-KITNKH

Coat, pants and suspenders.

HERO PBI MAX NFPA 2013 UL COMBO FP-COM-5

Coat, pants, suspenders, helmet, boots, gloves, hood and suit carry bag.

HERO PBI MAX NFPA 2013 UL KIT FP-HERO

Coat, pants and suspenders.



PROXIMITY TURNOUT GEAR

The ideal outfit for the most extreme conditions. Sköld Proximity Turnout Gear are lightweight, resistant to radiant heat and are designed for use in fires and rescues such as Casting Plants, Steelmaking, Chemicals, Airport Facilities and other industries and uses where the ambient temperature can reach up to 200°F (93°C). The suits have an outer layer of aluminized Kevlar that reflects 90% of radiant heat to withstand radiant temperatures up to 2000°F (1093°C), and are fabricated to allow flexibility and free movement.

FEATURES

- Aluminized FR Kevlar fabric.
- Inside pockets.
- Free hanging throat tab stays out of your way when not deployed and offers 36 degrees of protection.
- Double and triple Kevlar stitches in areas where there is more tear probability and for longer service life.
- Fire retardant velcro/zipper for an airtight seal against vapors.
- Kevlar sleeve knit wrist with thumbhole.
- Emergency escape zipper system.
- Fast connection suspenders.
- Comfort padded suspenders.

Available in:

- NFPA 1971-1991 compliance.
- NFPA 1971-2013 compliance.



WILDLAND TURNOUT GEAR

In Sköld we have professional firefighter suits made of Nomex IIIA 6.0 oz with water repellent, an inherent fire resistant fiber that never loses in the life of the garment and which meets the standard characteristics when not melting, not Dripping and not flame.

Sköld Forest Firefighter Suits are manufactured with the equivalence to the American standard NFPA 1977-2011 with the best quality materials, design and manufacture that allow the safety and comfort for the expositions of forest fires.

Available in:

- Coat /
- Shirt Pants
- Coverall





RESCUE COVERALL

In Sköld we are committed to the rescue corps that day by day risk their lives to help someone else, that is why we make the best clothes for rescue, to accompany them in their work and to keep them safe.

- Available in:
- Coat / Shirt
 - Pants
 - Coverall

PROXIMITY TURNOUT GEAR

PROXIMITY TURNOUT GEAR NFPA 2013 **FPAPROX13**

PROXIMITY TURNOUT GEAR NFPA 1991 **FPAPROX91**

WILDLAND TURNOUT GEAR

WILDLAND COAT **FPFTJ**

WILDLAND PANT **FPFTP**

NOMEX RESCUE COVERALL

NOMEX IIIA RESCUE COVERALL **FPOR**

ACCESORIES

FIREFIGHTER BOOT

Our boot is handmade with natural rubber and high quality components that are certified with NFPA 1971-2007.

Our manual process combined with the vulcanized in autoclave makes this a product of excellent quality under ISO 9001-2008 standards.

The internal design provides the comfort and safety that is required in the activities of firefighters.



BATA BY SKÖLD

- Capellada: Rubber resistant to flame and heat, with foam insulation in RU (optional).
- Template: Expanded/padded rubber of 100% cotton that does not produce bad smell in periods of long use.
- Toecap: In steel, it complies with the standard EN 12568, withstands a compression force (of 222.5 N or 50 lbf), and the impact of 102 Joules.
- Midsole Steel: Puncture protection according to the requirements of NFPA 1971-2007.
- Cambrian: Metallic, gives stability when walking and when standing on stairs, meets NFPA 1971-2007.
- Sole: Molded or calendered in non-slip rubber.
- Heel: Molded in natural rubber and designed to cushion the blows.
- Handles: In rubber.
- Waterproof: 100%.

THOROGOOD

- 35 cm tall.
- Made of vulcanized rubber with 3.5 mm polyester inner lining.
- Pierce-resistant stainless steel midsole, with removable Superknit insole covered with polyurethane.
- With high visibility reflective tapes.



FIREFIGHTER HELMET

The firefighter's helmet is made of fiberglass base, which makes it resistant to chemical attack and stable in exposures to high temperatures. It provides an excellent comfort and great performance offering a long life. It presents and exceeds the strongest requirements against heat among all structural firefighters' helmets.



AMERICAN STYLE

- Helmet made of thermoplastic material, resistant to chemical attack and stable in exposures to high temperatures.
- With aluminized Kevlar skirt and Nomex inner lining.
- Cushioned interior support for comfort.
- It has a 4-point adjustable chinstrap quick-action retirement.

BULLARD

- Thermoplastic - CB-
 - LT. Fiberglass - CB-
 - FX
 - NY Stykle - CB-UST
- With Nomex rip-stop protector for neck and ears.
Suspension of 4-point bands and 4-inch PPC face shield. Nomex chinstrap and fast joint system.
Scotchlite reflective strips and D ring in stainless steel.



EUROPEAN

- Firefighter helmet in thermoplastic material with ratchet, 6 point of suspension, includes Led lamp, polycarbonate mica, skirt and collar covers.
- Retardant mask and high resistance against fire.
- Model designed for forestry and structural use against fire, rescue and medical and industrial protection services.



NEW YORK

- Combines the look of a traditional-style helmet with the lightest weight and high-performance protection of state-of-the-art fiberglass technology.
- Fiberglass shell which uses the exclusive technology composed by TherMax patented to guarantee the protection.

NOMEX HOOD

Full-face double layer hood, 17" long, in Nomex IIIA knit in natural white, lightweight, double layer, comfortable fit. Designed to protect the hair, ears and back of the head against heat and flames raised during a fire, seamless in the beard area for added protection.

The full face hood can be used with your Phantom self-contained equipment (SCBA). Stitched with 100% Nomex thread. The hood has an 18" protection that perfectly covers the firefighter's chest, also perfectly covers the parts of the face that must be protected and has a perfect fit on the head and any type of face, designed to be used with or without a SCBA full face mask.



CARBONX HOOD



Fourth generation of advanced CARBON technology. When exposed to the flame, the Carbon X fiber expands, creating an atmosphere of oxygen shortage so the fire can not continue. The material is self-extinguishing totally inherent, resistant to fire (without strong chemical treatments). Neutralizing odors, anti-static, low thermal conductivity. Maintains performance values after washing.

FIREFIGHTER GLOVES

The glove is specifically designed for structural fires, it is designed to withstand the effects of flames, heat, vapors, hazardous liquids, sharp objects and any other hazards that may be encountered during firefighter operations.

Designed in gold and black color thermal skin, gun cut, and wing type thumb. On the back of the glove has an elastic band at the height of the wrist area for better fit, skin reinforcement at the seam height of the middle fingers for greater strength, a palm reinforcement at the height of the index finger and the thumb helps to reduce wear and tear.



The index finger is constructed in a running fashion, eliminating the exposed seam. Modacrylic full interior cover (SEF) Self Extinguishing Fabric, the thermal cover is sewn to each finger of the skin layer, using Kevlar thread. It is provided with an inner skin bandola for easy drying and storage.

FIREFIGHTER AX

- Ergonomic handle made of fiberglass.
- High carbon steel head with edge.
- Handle of 90 cm.
- Head of 30 cm.



TURNOUT GEAR SHEET METAL CABINET

Made in sheet Cal. 22 (one door), with a firm structure in one piece. Red paint. With a shelf (glass not included). Feet of 10 cm and a galvanized padlock pin.



DIMENSIONS

| | CABINET FOR 1 OR 2 PIECES | CABINET FOR 3 OR 4 PIECES | CABINET FOR 5 OR 6 PIECES |
|--------|--------------------------------------|--------------------------------------|--------------------------------------|
| Front | 0.60 m | 0.90 m | 1.20 m |
| Height | 1.80 m | 1.80 m | 1.80 m |
| Bottom | 0.45 m | 0.45 m | 0.45 m |

FIRE FIGHTERBOOTS

SKÖLD FIRE FIGHTER BOOT BY BATA **FPBSK**
THOROGOOD FIRE FIGHTER BOOT **FPBSK-TG**

FIRE FIGHTERHELMETS

AMERICAN STYLE VIKING FIRE FIGHTER HELMET **FPCA**
BULLARD FIRE FIGHTER THERMOPLASTIC HELMET **CB-LT**
BULLARD FIRE FIGHTER FIBERGLASS HELMET **CB-FX**
EUROPEAN FIRE FIGHTER HELMET **MP1**
NEW YORK FIRE FIGHTER HELMET **CB-UST**

FIRE FIGHTERHOODS

NOMEX HOOD **FPEN**
CARBON X NOMEX HOOD **FPECX**

FIRE FIGHTERGLOVES

STRUCTURAL FIRE FIGHTER GLOVES **FPGS**

FIRE FIGHTERAX

FIRE FIGHTER AX **SKH**

FIRE FIGHTERCABINET

1 TO 2 SUITS FIRE FIGHTER CABINET **GBSK12**
3 TO 4 SUITS FIRE FIGHTER CABINET **GBSK34**
5 TO 6 SUITS FIRE FIGHTER CABINET **GBSK56**



**FIREFIGHTER
GEAR**



PHANTÖM SELF-CONTAINED BREATHING APPARATUS NFPA 1997

Sköld's Phantom equipment has a carbon fiber cylinder with capacities of 60 min (4500 PSI) and 30 min (2216 PSI) and a choice of 2 cylinders of 60 min (4500 PSI) in a single backpack, giving the largest quantity of mayor time to perform work in a dangerous atmosphere. Phantom is the ideal equipment for both industrial and fire-fighting requirements, giving the worker greater confort in máximum respiratory protection against extreme environments (IDLH atmosphere). Phantom is an equipment that meets the certification of attack against fire and industrial works, manufactured according to NFPA 1997 and CE certified.



PHANTÖM SELF-CONTAINED BREATHING APPARATUS NFPA 2002

Sköld's Phantom NFPA 2002 equipment has the latest technology in wireless communication giving the user precise and instant information of the amount of air counting with a HUD inside the fullface with visual information type LED plus a digital intelligent gage. It has 60 min carbon fiber cylinder giving the most amount of time to perform work in an atmosphere hazards. Phantom is the ideal equipment for both industrial and firefighting requirements, giving the worker greater confort in máximum respiratory protection against extreme environments (IDLH atmospheres). Phantom is a team that fulfills certification of fire attack and industrial works, manufactured according to NFPA 2002 and CE certified.



PHANTÖM SELF-CONTAINED BREATHING APPARATUS NFPA 2007

Sköld presents its new self contained breathing apparatus PHANTÖM III, a full SCBA patented technology which allows the user to have all the needed information to make decisions and leave safe from fire.

A display on the full face which gives information of pressure, time, temperature, real time even a compass in real time through a series of displays inside the user's mask. It also has fall-man system, SOS alarm which is triggered in the second stage regulator, low pressure alarm vibrating in fullface, and an adaptive communication system without having to change the machine just by adding accessories. Besides our SCBA continues with LED technology for HUD type for users accustomed to the old system.



CLOSED-CIRCUIT BREATHING APPARATUS

Sköld Closed-Circuit Breathing Apparatus combines uncompromising safety with respiratory protection and wearer comfort. The right choice for long chores in toxic or hostile "Immediately Dangerous to Life or Health" atmosphere's (IDLH).

FEATURES

- The CO2 absorber cartridge removes carbon dioxide from the exhaled air.
- Light weight carbon fiber cylinder.
- Air is not expelled from the apparatus, the soda lime absorbs the CO2 and purifies the air, compressed oxygen is constantly added by the cylinder, this process can last up to 4 hours.
- Simple sturdy structure, for long work shifts.
- The harness provides wide range of movement with little effort.
- The breathing tube/hose goes over the shoulders, giving a good sense of equilibrium.



EMERGENCY ESCAPE BREATHING DEVICES (EEBD)

Quick escape respiratory device, help user safely escape in case of a "Immediately Dangerous to Life or Health" atmosphere's (IDLH).

PAS REGULATOR EMERGENCY ESCAPE BREATHING DEVICE

- PAS Standard. Lung demand valve.
- Carried by shoulder strap, leaving your hands free.
- Carbon fiber wrapped cylinder.
- Hypoallergenic silicon full face mask with PAS demand regulator, polycarbonate visor with anti-fogging treatment.
- Up to 15min service.



CONSTANT FLOW EMERGENCY ESCAPE BREATHING DEVICE



- Constant 38 Lpm airflow.
- FR and Chemical resistant Hood.
- Special air flow design making the hood comfortable and efficient.
- The hood has an integrated exhalation valve.
- Up to 10min service.

SCBA PHANTÖM I NFPA 1997

SCBA 97 30 MIN SCBA-P30FC

Carbon fiber cylinder and carry case.

SCBA 97 60 MIN SCBA-P60FC

Carbon fiber cylinder and carry case.

SCBA 97 120 MIN SCBA-P120FC

Carbon fiber cylinder and carry case.

SCBA PHANTÖM II NFPA 2002

SCBA 2002 60 MIN SCBA-P02

Carbon fiber cylinder, LEDS, digital gage, and carry case.

SCBA PHANTÖM III NFPA 2007

SCBA 2007 60 MIN SCBA-P3

Carbon fiber cylinder, display and LEDS on HUD, digital gage, fall man alarm and carry case.

SCBA 2007 60 MIN SCBA-P3

Carbon fiber cylinder, display and LEDS on HUD, digital gage, fall man alarm, fullface with communication radio and carry case.

MINING SCBA

CLOSED CIRCUIT SCBA 4 HRS SK4

ESCAPE BREATHING DEVICE

PAS REGULATOR EMERGENCY ESCAPE SK-EPD

CONSTANT FLOW EMERGENCY ESCAPE SK-EFC

SINGLE GASDETECTOR

Sköld Safety has the ability to design, manufacture and sell gas detection instruments in local and global markets. The gas detection instruments we have designed are widely used in petrochemical, municipal environmental protection, coal mine, fire fighting, research laboratories and other natural and wide ranges of industrial environments.

Our main products are portable gas detectors, which can detect and monitor various toxic, VOC, oxygen, fuel and real-time concentration of flammable gases and provide users with solutions and signal detection alarm against potential hazards to ensure a good air quality and personal safety.

SINGLE GAS DETECTOR

- Intrinsic safety test and Ex test certificate.
- Portable, industry use, high sensitivity and precision.
- Fully adjustable high and low alarm, STEL and TWA alarm.
- Support log function data which is read via USB.



LEL GASDETECTOR



MULTIPLE GAS DETECTOR

- Intrinsically safe device, it can be used in potential explosive environment and has authorized reports.
- Support data logging, data records are read via USB and it's convenient for data recording. (Optional)

GAS DETECTORS

SINGLE GAS DETECTOR

LEL EXPLOSIVITY DETECTOR **SK1-LEL**

Sensor of 1year

LEL EXPLOSIVITY DETECTOR **SK1-LEL2**

Sensor of 2 years

O² DETECTOR (OXYGEN) **SK1-O2**

CO DETECTOR **SK1-CO**

2 year

H²S DETECTOR **SK1-H2S**

2 years

MULTIGAS DETECTOR

4 GAS DETECTOR **SK4**

LEL, O², CO, H²S - Sensor of 2
years





PHANTOM

by Sköld



BREATHING DEVICES

SAFETY TEXTILES





**SAFETY CLOTHING METAL
SPLASH/ELECTRIC ARCH/FLAME RESISTANT**

We have specialized in the manufacturing of safety clothing with specific fabrics for each type of industry like metal foundries: aluminum, steel, titanium, zinc, magnesium, etc.

ALUMINIZED

- **RAYON:** Ideal for areas with radiant heat but there is No risk of metal splash.
- **KEVLAR:** Ideal for areas with radiant heat but where There is risk of metal splash.
- **THERMICAL BARRIER:** All of our Aluminized Garments can be ordered with different thermal barrier that help reduce radiant heat inside the garment.
- Front or Back Safety Flap with FR Velcro Snap Closures.
- Under-arm ventilated eyelets, ventilated back.
- Aluminized front with FR & Metal Splash fabric in the back.
- Kevlar wristlets.



Metals that melt over 1472°F (800°C): Complies with UNE EN 9185.
Titanium, brass, silver, copper, iron, steel, stainless steel, nickel and tungsten.

Metals that melt under 1472°F (800°C): Complies with UNE EN 9185.
Zinc, lead, bronze, tin, magnesium and aluminum.



ALUMINIZED

ALUMINIZED RAYON CLOTHING

ALUMINIZED RAYON UNLINED HELMET **AL101**
ALUMINIZED RAYON COTTON LINING HELMET **AL131**
ALUMINIZED RAYON FIREPROOF LINING HELMET **AL111**
ALUMINIZED RAYON ARAMID LINING HELMET **AL121**

ALUMINIZED RAYON UNLINED COAT 80 CM **AL102-80**
ALUMINIZED RAYON COTTON LINING COAT 80 CM **AL132-80**
ALUMINIZED RAYON FIREPROOF LINING COAT 80 CM **AL112-80**
ALUMINIZED RAYON ARAMID LINING COAT 80 CM **AL122-80**

ALUMINIZED RAYON UNLINED COAT 90 CM **AL102-90**
ALUMINIZED RAYON COTTON LINING COAT 90 CM **AL132-90**
ALUMINIZED RAYON FIREPROOF LINING COAT 90 CM **AL112-90**
ALUMINIZED RAYON ARAMID LINING COAT 90 CM **AL122-90**

ALUMINIZED RAYON UNLINED COAT 100 CM **AL102-100**
ALUMINIZED RAYON COTTON LINING COAT 100 CM **AL132-100**
ALUMINIZED RAYON FIREPROOF LINING COAT 100 CM **AL112-100**
ALUMINIZED RAYON ARAMID LINING COAT 100 CM **AL122-100**

ALUMINIZED RAYON PANTS UNLINED **AL103**
ALUMINIZED RAYON PANTS COTTON LINING **AL133**
ALUMINIZED RAYON PANTS FIREPROOF LINING **AL113**
ALUMINIZED RAYON PANTS ARAMID LINING **AL123**

ALUMINIZED RAYON UNLINED GAITER 40 CM **AL104**
ALUMINIZED RAYON COTTON LINING GAITER 40 CM **AL134**
ALUMINIZED RAYON FIREPROOF LINING GAITER 40 CM **AL114**
ALUMINIZED RAYON ARAMID LINING GAITER 40 CM **AL124**

ALUMINIZED RAYON UNLINED SLEEVE 40 CM **AL106**
ALUMINIZED RAYON COTTON LINING SLEEVE 40 CM **AL136**
ALUMINIZED RAYON FIREPROOF LINING SLEEVE 40 CM **AL116**
ALUMINIZED RAYON ARAMID LINING SLEEVE 40 CM **AL126**

ALUMINIZED RAYON UNLINED MANDIL 60x90 CM **AL107**
ALUMINIZED RAYON COTTON LINING MANDIL 60x90 CM **AL137**
ALUMINIZED RAYON FIREPROOF LINING MANDIL 60x90 CM **AL117**
ALUMINIZED RAYON ARAMID LINING MANDIL 60x90 CM **AL127**

ALUMINIZED KEVLAR CLOTHING

ALUMINIZED KEVLAR UNLINED HELMET **AL201**
ALUMINIZED KEVLAR COTTON LINING HELMET **AL231**
ALUMINIZED KEVLAR FIREPROOF LINING HELMET **AL211**
ALUMINIZED KEVLAR ARAMID LINING HELMET **AL221**

ALUMINIZED KEVLAR UNLINED COAT 80 CM **AL202-80**
ALUMINIZED KEVLAR COTTON LINING COAT 80 CM **AL232-80**
ALUMINIZED KEVLAR FIREPROOF LINING COAT 80 CM **AL212-80**
ALUMINIZED KEVLAR ARAMID LINING COAT 80 CM **AL222-80**

ALUMINIZED KEVLAR PANTS UNLINED **AL203**
ALUMINIZED KEVLAR PANTS COTTON LINING **AL233**
ALUMINIZED KEVLAR PANTS FIREPROOF LINING **AL213**
ALUMINIZED KEVLAR PANTS ARAMID LINING **AL223**

ALUMINIZED KEVLAR UNLINED GAITER 40 CM **AL204**
ALUMINIZED KEVLAR COTTON LINING GAITER 40 CM **AL234**
ALUMINIZED KEVLAR FIREPROOF LINING GAITER 40 CM **AL214**
ALUMINIZED KEVLAR ARAMID LINING GAITER 40 CM **AL224**

ALUMINIZED KEVLAR UNLINED SLEEVE 40 CM **AL206**
ALUMINIZED KEVLAR COTTON LINING SLEEVE 40 CM **AL236**
ALUMINIZED KEVLAR FIREPROOF LINING SLEEVE 40 CM **AL216**
ALUMINIZED KEVLAR ARAMID LINING SLEEVE 40 CM **AL126**

ALUMINIZED KEVLAR UNLINED MANDIL 60x90 CM **AL207**
ALUMINIZED KEVLAR COTTON LINING MANDIL 60x90 CM **AL237**
ALUMINIZED KEVLAR FIREPROOF LINING MANDIL 60x90 CM **AL217**
ALUMINIZED KEVLAR ARAMID LINING MANDIL 60x90 CM **AL227**

ALUMINIZED

NOMEX MHP CLOTHING

- Sköld and Dupont offer Nomex® fiber an excellent fabric in its category in terms of its resistance and protection against fire, sudden explosion and / or electric arc.



FLAME RESISTANT WELDING JACKET

- 100% flame-resistance (FR) treated 9 oz. cotton sateen fabric.
- Full cut patterns.
- Reinforced snap front.
- Anti-flame steel in push buttons.
- Sewed with safety thread.



ELECTRIC ARCH 40KCAL IV CLASS

- This clothing consists of 100% flameproof (non-retardant) double-layer garments sewn with Nomex yarn and NFPA fire-resistant velcro closures.

ENCAPSULATED SUIT LEVEL A

- Chemical protective clothing is specially designed to protect human from being damaged by chemicals. The suit is made by brocade silk cloth which is flame resistant and double coated with flame-retardant plastic surface. When in fire, it's only charring, insoluble and maintaining good strength. The suit includes suit, gloves and boots. nsically safe device, it can be used in potential explosive environment.





POLAR PROTECTIVE CLOTHING

- Sköld Safety presents its line of clothes against cold which has the best insulation technology for industrial freezers up to -25° C.
- They are very comfortable garments of low grammage, can be washed with waterproof outer fabric with armored seams, hypoallergenic, without odor, fast drying and a high resistance to cutting and abrasion.



CHEMICAL PROTECTIVE CLOTHING

- Chemical protective clothing is specially designed to protect human from being damaged by chemicals. The suit is made by brocade silk cloth which is flame resistant and double coated with flame-retardant plastic surface. When in fire, it's only charring, insoluble and maintaining good strength.
- The suit includes suit, gloves and boots. nsically safe device, it can be used in potential explosive environment.

WELDER CLOTHING

- ANTI FLAME GREEN JACKET WELDER 75 CMS LONG **SKCSV**
- GREEN WELDER JACKET WITH REFLECTIVE **SKCSV_R**
- CAMISOLE VERTICAL SEAL PREMIUM 320SW **SVP320-C**

CLOTHING NOMEX / FIREPROOF

- FIREPROOF OVERALLS **SKOVEQ**
- FIREPROOF SHIRT **SKCAEQ**
- FIREPROOF PANTS **SKPAEQ**
- FIREPROOF WORK CAMISOLE **SKCAMEQ**

ALUMINIUM CASTINGS - HIGH TEMPERATURE

- CAMISOLE **RFBT-C**
- PANTS **RFBT-P**
- COVERALLS **RFBT-O**
- COAT **RFBT-B**

CLOTHING

CLOTHING

ALUMINIUM CASTINGS - LOW TEMPERATURE

CAMISOLE RFAT-C

PANTS RFAT-P

COVERALLS RFAT-O

COAT RFAT-B

ELECTRIC FLASH APPAREL

CLASS II 9KCAL SHIRT ARC-II-C

CLASS II 9KCAL PANT ARC-II-P

CLASS II 9KCAL COVERALL ARC-II-O

CLASS II 9KCAL HOOD ARC-II-E

ARCH FLASH 40 KCAL CLASS IV

BIB TROUSERS ARC-IV-P

COAT 32 INCHES ARC-IV-B32

COAT 49 INCHES ARC-IV-B49

HOOD ARC-IV-E

CHEMICAL PROTECTIVE CLOTHING

CAMISOLE AGAINST ACID RAC-1

With cap closure snap and elastic cuffs.

CAMISOLE AGAINST ACID RAC-2

With gloves cones and snap-on flap.

CAMISOLE AGAINST ACID RAC-3

With cap and gloves cones, with snap-on flap.

PANTS WITH BIB AGAINST ACID RAC-4

MID-BODY HOOD AGAINST ACID RAC-5

With air-lines cones for gloves.

ENCAPSULATED SUIT

ENCAPSULATED SUIT LEVEL A SK3312

POLAR PROTECTION CLOTHING

JACKET AGAINST COLD -13 °F CH-25

Without hat.

CAP SUITABLE FOR SKÖLD JACKET GA-25

BIB TROUSERS AGAINST COLD -13 °F P-25

HEATING SYSTEM SC-25



SNAKE GAITER

VENÖM is the solution in protection against reptile bites, thorns, and other rugged or sharp surfaces.

They offer extreme protection and comfort from the knee to the footbridge. VENÖM is the best snake gaiter in the market, not only is it totally flexible, it has 4 layers of high resistance polyamide with a polycarbonate armor insert which offers excellent mobility offering the best protection to the user.

VENÖM

- Available sizes:
 - Regular
 - Wide
- Dimensions: 16" height, 4" Knee height, 20" perimeter, 4" foot protection.
- Weight: 28oz (pair). Very flexible.
- 2" in Hook & Loop Velcro closure.
- High density polycarbonate armor. Ultra guard fiber stitches (high resistance to cuts and abrasions).



Venöm XT

- Venöm XT is the perfect Viborera gaiter for environments where reptiles coexist with Electrical Industries or explosive environments such as oil and gas.
- Venöm XT has all the comfort and safety features with its polycarbonate armor to prevent stings from snakes, reptiles, spines and sharp surfaces. Ideal for welding in the field.



Flame Retardant

9 kcal electric arc.

Antistatic

SNAKE GAITERS

VENÖM SNAKE GAITER

VENÖM TRADITIONAL **PVV**

VENÖM XT **PVVXT**

VENÖM CUT WITH KEVLAR LAYER **PVC**

VENÖM SCORPION 4 LAYERS **PVS**

Without polycarbonate armor, not for snakes.

SAFETY TEXTILES



FALL PROTECTION

HARNESSES

Sköld's Fall Arrest Harness is one the most versatile harnesses in the market. It features leg to shoulder adjustment, chest adjustment and an adjustable sub pelvic area this results as a harness that adjusts perfectly to the user with maximum protection and comfort.



NYLON WEBBING HARNESS
With reflective seams

- 5 Adjustable points.
- Fall Indicator.
- Adjustable D-ring.
- Adjustable Chest Strap.
- Quick Connect Pass-Thru Buckles.
- Max. Working Load: 400 lbs(140 kg).
- Nylon Webbing Min.Tensile: 7000 lbs(31 kN). D-ring Min. Tensile: 5500 lbs (22kN).
- Buckle Min. Tensile: 5500 lbs(18 kN). Universal Size.

DIELECTRIC NON-CONDUCTIVE HARNESS

- Special Non-Conductive D-rings and Quick Connect Buckles.
- 5 adjustable points.
- Fall Indicator.
- Quick Connect Pass-Thru Buckles.
- Max. Working Load: 400 lbs (140 kg).
- Nylon Webbing Min. Tensile: 7000 lbs (31 kN). D-ring Min. Tensile: 5500 lbs(22 kN).
- Buckle Min. Tensile 5500 lbs(18 kN). Universal Size.



KEVLAR / NOMEX HARNESS
Flame retardant

- Nomex®/Kevlar® Webbing Rugged, black Nomex outside and Kevlar inside provide superior comfort and durability for harsh working environments.
- 5 Adjustable points.
- Fall Indicator.
- Adjustable D-ring.
- Adjustable Chest Strap.
- Quick Connect Pass-Thru Buckles.
- Max. Working Load: 400 lbs (140 kg).
- Webbing Min.Tensile: 9000 lbs (31 kN). D-ring Min. Tensile: 5500 lbs (22 kN). Buckle Min. Tensile: 5500 lbs (18 kN). Universal Size.

NYLON HARNESS H TYPE

NYLON HARNESS 1DRING **AN1**

D Ring on back.

NYLON HARNESS 2D RING **AN2**

D Ring on back and chest.

NYLON HARNESS 3D RING **AN3**

D Ring on back and waist.

NYLON HARNESS 4D RING **AN4**

D Ring on back, chest and waist.

NYLON HARNESS 5D RING **AN5**

D Ring on back, shoulders and waist.

NYLON HARNESS 6D RING **AN6**

D Ring on back, chest, shoulders and waist.

NYLON HARNESS 8D RING **AN8**

D Ring on back, chest, shoulders, waist and seat sling.

DIELECTRIC NYLON HARNESS H TYPE

DIELECTRIC HARNESS 1DRING **AD1**

D Ring on back.

DIELECTRIC HARNESS 3D RING **AD3**

D Ring on back and waist.

DIELECTRIC HARNESS 4D RING **AD4**

D Ring on back, chest and waist.

NYLON HARNESS X TYPE

X TYPE NYLON HARNESS 1DRING **AX1**

D Ring on back.

X TYPE NYLON HARNESS 2D RING **AX2**

D Ring on back and chest.

X TYPE NYLON HARNESS 3D RING **AX3**

D Ring on back and waist.

X TYPE NYLON HARNESS 4D RING **AX4**

D Ring on back, chest and waist.

X TYPE NYLON HARNESS 5D RING **AX5**

D Ring on back, shoulders and waist.

X TYPE NYLON HARNESS 6D RING **AX6**

D Ring on back, chest, shoulders and waist.

X TYPE NYLON HARNESS 8D RING **AX8**

D Ring on back, chest, shoulders, waist and seat sling.

DIELECTRIC NYLON HARNESS X TYPE

DIELECTRIC HARNESS 1DRING **AXD1**

D Ring on back.

DIELECTRIC HARNESS 3D RING **AXD3**

D Ring on back and waist.

DIELECTRIC HARNESS 4D RING **AXD4**

D Ring on back, chest and waist.

KEVLAR HARNESS H TYPE

KEVLAR HARNESS 1D RING **AK1**

D Ring on back.

KEVLAR HARNESS 3D RING **AK3**

D Ring on back and waist.

KEVLAR HARNESS 4D RING **AK4**

D Ring on back, chest and waist.

DIELECTRIC KEVLAR HARNESS H TYPE

DIELECTRIC KEVLAR HARNESS 1D RING **AKD1**

D Ring on back.

DIELECTRIC KEVLAR HARNESS 3D RING **AKD3**

D Ring on back and waist.

DIELECTRIC KEVLAR HARNESS 4D RING **AKD4**

D Ring on back, chest and waist.

KEVLAR HARNESS X TYPE

KEVLAR HARNESS 1D RING **AXK1**

D Ring on back.

KEVLAR HARNESS 3D RING **AXK3**

D Ring on back and waist.

KEVLAR HARNESS 4D RING **AXK4**

D Ring on back, chest and waist.

DIELECTRIC KEVLAR HARNESS X TYPE

DIELECTRIC KEVLAR HARNESS 1D RING **AXKD1**

D Ring on back.

DIELECTRIC KEVLAR HARNESS 3D RING **AXKD3**

D Ring on back and waist.

DIELECTRIC KEVLAR HARNESS 4D RING **AXKD4**

D Ring on back, chest and waist.

RESCUE / TOWER HARNESS

RESCUE / TOWER HARNESS 5D RING **ATT5**

RESCUE / TOWER HARNESS 7D RING **ATT7**

RESCUE / TOWER KEVLAR HARNESS 5D RING **ATTK5**

RESCUE / TOWER KEVLAR DIELECTRIC **ATTKD5** HARNESS 5DRING

HARNESS WITH ATTACHED LANYARD

HARNESS WITH ATTACHED SAFETY LANYARD **AN-LVN**

HARNESS WITH ATTACHED SAFETY **AN-LVN-GG13** LANYARD W/REBAR HOOK ANSI 2013



**FALL PROTECTION
ECONOMIC LINE**

Sköld presents its new Spartan economic height line, so that people working in risky places have the possibility of working safely, with the aim of stopping the free fall in works of a height higher than 1.80 meters, or a height of less than 1.80 meters with dangerous condition.

It is made of nylon with chest and sub-pelvic adjustment, so that if it were to suffer a free fall, all the forces of the impact load are evenly distributed through the legs, hips, chest and shoulders., with which it is possible to direct the pressures generated upwards and outwards, which contributes directly to reducing the probability that the person suffers injuries when his fall is suddenly stopped; This results in a harness that fits the user perfectly for maximum protection and comfort.

FEATURES

- Ring in back fall prevention.
 - Hoops on hips for positioning.
 - Adjustable sub pelvic band.
 - 3 adjustment points on torso, legs and chest.
 - Adjustable chest strap.
 - Tape with static resistance of 4,082 kg (9,000 lbs).
 - Tape retainer clips for legs and shoulders.
 - Inspection label
 - Serial number.
 - Serial number.
 - It can accommodate a tool belt.
 - Orange color making inspection easier.
 - Galvanized steel hardware resistant to salinity and corrosion.
 - Buckles and rings with resistance to environmental corrosion for 48 hours.
 - Load capacity: 140 kgs. (310 lbs).
- The harness is adjusted with the hexagonal slider.



ECONOMIC FALL PROTECTION LINE

ECONOMIC HARNESS 1DRING **ANE1**

ECONOMIC HARNESS 3D RING **ANE3**

ECONOMIC HARNESS WITH **ANLVE1**
LANYARD

LANYARD

Sköld lanyards which are characterized by having an integrated shock absorber that dissipates the energy accumulated in a fall.

Our galvanized steel hooks comply with the new ANSI and OSHA certification which, in addition to the normal tests, introduced the new test to the door of the hook for 3600 pounds of pressure.

SHOCK ABSORBING WEB LANYARD

- Nylon band.
- Fall damper.
- 1/2" double insurance hook.
- 2" double insurance hook.



SHOCK ABSORBING KEVLAR LANYARD



SHOCK ABSORBING ROPE LANYARD

- Nylon rope.
- Fall damper.
- 1/2" double insurance hook.
- 2" double insurance hook.

SHOCK ABSORBING CABLE LANYARD

- Nylon rope.
- Fall damper.
- 1/2" double insurance hook.
- 2" double insurance hook.



POSITION STRINGS

Sköld offers different solutions for positioning work to the worker is always 100% protected in work at height.

ROPE POSITIONING LANYARD



WEB POSITIONING LANYARD



POSITIONING STEEL CABLE LANYARD



CONFINED SYSTEMSPACE

CODE SEC

Confined Includes:

- Tri-foot.
- 3-way handle 50' (15.00 MT).
- Handle Tools.
- Sköld suitcase.

CODE TRD

- 3-way tri-foot with handle 50' (15.00 MT).



ANCHOR POINTS

The Sliding Beam Anchor is a mobile device designed for personal protection against falls in structural beams. The wing widths vary from 4 to 14 inches and the flange thickness up to 1.5 inches so they adapt to all measurements.

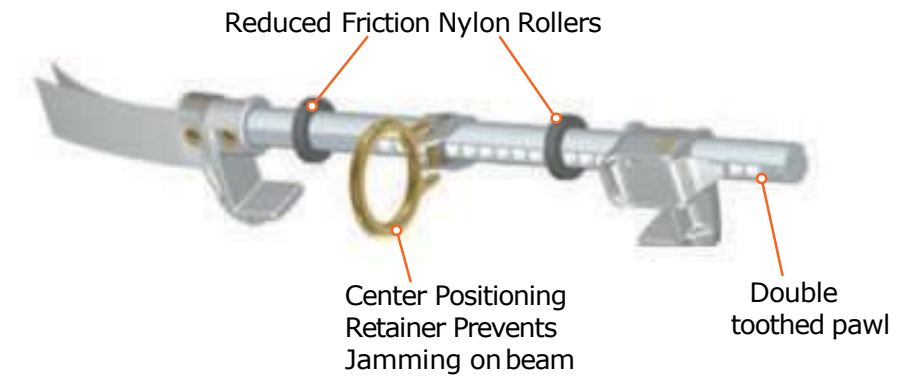
The sliding beam anchor can be connected to the top or bottom of a beam structure. The crossbar has grooves that run along its length. It contains a mobile and stationary gag.

PAPV

- Adjustable beam anchor.
- Fits 3 1/2".
- Beams 1/4".
- Thickness.

PAPVE

- Fixed beam anchor.



TIE-OFF ADAPTER

- Anchorage point manufactured in 2" Nylon band, with a measurement of .90 cm.



CABLE TIE-OFF ADAPTER D-RING AT EACH END

- Steel cable for construction of 5/16".
- With vinyl coating that provides greater resistance to wear and abrasion.
- Lightweight and versatile, it adapts to a wide variety of anchor points.

SELF RETRACTING LANYARD

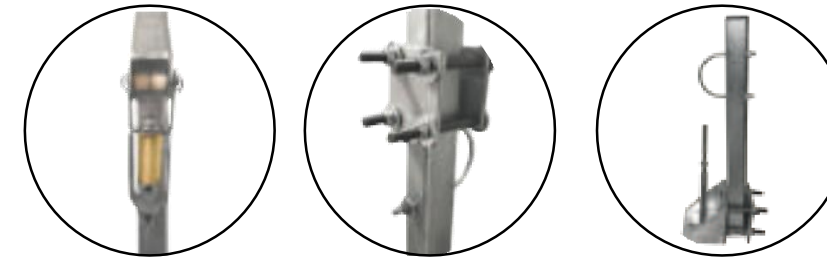
Sköld retractable lines have an automatic braking system to prevent a fall; in this way the fall is immediately restricted by the retractable reaction. The cable length is adjusted automatically thanks to an integrated system that offers the user unparalleled freedom of movement and at the same time a 100% security.



VERTICAL LANYARD

VERTICAL LANYARD GALVANIZED STEEL

- It is a fixed system which is made to the measurement of the ladder having anchorages in the 2 ends in addition to shock absorber and tensioner. This system has a more elaborate but simple installation for any maintenance personnel.



PAPVE

- Sköld portable vertical lifeline used for vertical movements in heights work in such a way that it is always connected to a safe point to avoid falls. This system can be used by up to 2 people at the same time in any type of length. Ideal for use in ladders, scaffolding, construction industry.



HORIZONTAL LANYARD

Line of horizontal life for two people adjustable from 1meter to 20 meters and with the characteristic of being portable since it has a system to put and remove very easily.

It has two extra strong anchor points to surround beams, columns or other anchors. It has two safety hooks for the structural connection, 2D mobile rings for connecting the band and a user-friendly ratchet tensioner and carrying bag.

HORIZONTAL ADJUSTABLE AND PORTABLE WEB LANYARD



HORIZONTAL ADJUSTABLE AND PORTABLE CABLE LANYARD



NYLON WEBBING

SHOCK ABSORBING WEB LANYARD **LVN**

SHOCK ABSORBING WEB LANYARD **LVN-GG**

With rebar hooks

SHOCK ABSORBING DUAL WEB LANYARD **LVN-D-GG**

With rebar hooks

SHOCK ABSORBING DUAL WEB LANYARD **LVN-D-GN**

SHOCK ABSORBING WEB LANYARD **LVN-GG13**

With rebar hooks ANSI 2013

NYLON ROPE WEBBING

SHOCK ABSORBING ROPE LANYARD **LVC**

SHOCK ABSORBING DUAL ROPE LANYARD **LVC-D-GG**

With rebar hooks

SHOCK ABSORBING DUAL ROPE LANYARD **LVC-D-GC**

PVC COATED CABLE LANYARD

SHOCK ABSORBING PVC COATED **LVA**
CABLE LANYARD

SHOCK ABSORBING DUAL PVC COATED **LVA-D-GG**
CABLE LANYARD

With rebar hooks

SHOCK ABSORBING DUAL PVC COATED **LVA-D-GN**
CABLE LANYARD

LANYARD

LANYARD

KEVLAR WEBBING

SHOCK ABSORBING KEVLAR WEB LANYARD **LVK**

SHOCK ABSORBING KEVLAR WEB LANYARD **LVK-GG**
With rebar hooks

SHOCK ABSORBING DUAL KEVLAR WEB LANYARD **LVK-D-GG**
With rebar hooks

SHOCK ABSORBING DUAL KEVLAR WEB LANYARD **LVK-D-GC**

DIELECTRIC LANYARDS

SHOCK ABSORBING DIELECTRIC SOFT LOOP LANYARD **LVD1**

SHOCK ABSORBING DIELECTRIC SOFT LOOP LANYARD **LDV2**
With rebar hooks

SHOCK ABSORBING DIELECTRIC SOFT LOOP LANYARD **LDVDGG13**
With rebar hooks ANSI 2013

SHOCK ABSORBING DIELECTRIC SOFT LOOP LANYARD **LVD3**
With dielectric rebar hooks

SHOCK ABSORBING DIELECTRIC SOFT LOOP DUAL LANYARD **LVD4**
With dielectric rebar hooks

POSITIONING LANYARDS

ROPE POSITIONING LANYARD **CP**

WEB POSITIONING LANYARD **BP**

CABLE POSITIONING LANYARD **CAP**

CONFINED SPACE TRIPOD

CONFINED SYSTEM SPACE **EC-30**
3 way winch, tool winch and carry bag

ANCHOR POINTS

TIE-OFF ADAPTER **PA1**

TIE-OFF ADAPTER D-RING AT EACH END **PA2**

CABLE TIE-OFF ADAPTER D-RING AT EACH END **PAA2**

PREMIUM BEAM ANCHOR **PAPV**

BEAM ANCHOR **PAPVE**

SELF RETRACTING LANYARD

10 FT (3 M) CABLE SELF RETRACTING LANYARD **PCGS10FT**

20 FT (6 M) CABLE SELF RETRACTING LANYARD **PCS20FT**

30 FT (9 M) CABLE SELF RETRACTING LANYARD **PS30FT**

50 FT (15 M) CABLE SELF RETRACTING LANYARD **PS50FT**

6 FT (1.82 M) WEB SELF RETRACTING LANYARD **PCWB**

11 FT (3.35 M) WEB SELF RETRACTING LANYARD **PCWB11FT**

20 FT (6 M) WEB SELF RETRACTING LANYARD **PW20FT**

30 FT (9 M) WEB SELF RETRACTING LANYARD **PW30FT**

LANYARD

LANYARD

STEEL CABLE VERTICAL LANYARD

VERTICAL $\pm/9''$ (30 FT) STEEL CABLE LANYARD **LVV-AG-10**
With mobile cable grab

VERTICAL ROPE LANYARD W/SNAP HOOKS

VERTICAL ROPE LANYARD 10 FT (3 M) **LVVC-3**

VERTICAL ROPE LANYARD 25 FT (7.5 M) **LVVC-25**

VERTICAL ROPE LANYARD 50 FT (15 M) **LVVC-50**

VERTICAL ROPE LANYARD 75 FT (23 M) **LVVC-75**

VERTICAL ROPE LANYARD 100 FT (30 M) **LVVC-100**

VERTICAL ROPE LANYARD 150 FT (45 M) **LVVC-150**

VERTICAL ROPE LANYARD 200 FT (61 M) **LVVC-200**

VERTICAL ROPE LANYARD 250 FT (76 M) **LVVC-250**

FALL PROTECTION



**EYEWASH
AND
SHOWER**

PORTABLE EYEWASH

Sköld Safety manufactures emergency combo shower and portable eyewash station of the highest quality for industrial laboratories, hospitals, school and universities. Taking into account and accomplish the international regulations we put all our effort to save sight and skin in accidents that eventually occurs in the areas of everyday work.



ANSI Z358.1

FEATURES

- Tank. High visibility yellow polyethylene, two handles for transport.
- Portable Eyewash. ABS plastic sprinkles are incorporated into an open and close tray with drainage, double harmless water stream at 0.4 gpm.
- Weight. 138 lbs. (62.6 kg) full for 15minutes. 19lbs (8.61) empty.



EYEWASH BOTTLE

- 0.350 liters capacity.
- 3 minutes of irrigation duration.

STAINLESS STEEL SHOWER WITH EYEWASH

This first aid station is designed to ensure the effectiveness of action in first moments that are crucial when an emergency occurs.

The shower and eyewash station incorporates an automatic flow compensator that ensures a constant water flow even when pressure variations occurs in the supply network.

FEATURES

- The shower head and eyewash bowl are made of stainless steel.
- The pipes are made of stainless steel..
- Weight: 20kg.





PEDESTAL EYEWASH

- 1/2" stainless steel tubing, 1/2" BCP continuous flow valve with chrome ball; SS mother valve; stainless steel push plate with action graphics; stainless steel pedestal.

PRESSURIZED EYEWASH WITH SHOWER

- The eyewash / shower hoses, self-contained portable are designed for use in areas where piped water is not available. The portable station with thermal jacket (models 120 VAC or 12) are designed to keep the water in the tank at a temperature between 60° F and 90° F (15° C and 32° C), +5° F (2.8° C) to help prevent the user from colliding with cold water. All portable pressurized stations are subject to air testing in the plant.



EMERGENCY SHOWER AND PORTABLE EYEWASH

PORTABLE EYEWASH STATION LOP-14

14 gallons

EMERGENCY COMBO SHOWER AND EYEWASH LVK-D-GG

Stainless steel

SHOCK ABSORBING DUAL KEVLAR WEB LANYARD LVK-D-GC



EYE WASH AND SHOWER

RESCUE



RIGID STRETCHER

Rigid stretcher (long spinal splint) of high density for the transfer of injured. Light and durable, built in one piece to prevent fractures or penetration of liquids. Designed with high floatability and X-ray capability. It is easy to clean and has a load capacity of 160kg. Made of high-strength engineering plastic. It is a necessary tool in the first aid kit for the medical center.



ROLL-ON STRETCHER

Unlike traditional baskets, our Sköld roll-on stretcher facilitates rescue operations in confined spaces, mountains, heights and in incidents of hazardous materials. It is made of composite plastic which provides a load capacity of 200kg. In addition to being easy to store, it facilitates transportation within the most complicated situations thanks to its backpack.



STRETCHERS

RIGID STRETCHER **CRP**

ROLL-ON STRETCHER **CRC**